

NAME .....

TEACHER/SECTION .....

DATE .....

## ACTIVITY

**3**



### Constructing a Food Web

#### What you need

(Per group)

Diagram, *Food Web*

Colored Pencils (optional)

Pencil

#### What to do...

In Activity 3 you will use information in the table on the following page to determine the feeding (i.e. trophic) levels for a food web. In this process you will learn "who eats whom".

#### Step 1

Use a pencil to draw arrows that connect predators with their associated prey. Draw the arrows to point from the prey towards the predator.

#### Step 2

At your teacher's direction, use colored pencils to color each organism with the appropriate color for each trophic level:

Identifying Color	Trophic Level
GREEN	Producers
YELLOW	Consumer: herbivore
RED	Consumer: carnivore
ORANGE	Consumer: omnivore
BLUE	Consumer: decomposer

NAME .....

TEACHER/SECTION .....

DATE .....

**WHO EATS WHOM**

**TROPHIC LEVELS**

**Producers:** Green plants; manufacturer food from light energy.

**Consumers:**

Herbivores-plant feeders

Carnivores-consume herbivores

Omnivores- consume both plant and animal matter; act as scavengers

Decomposer-microorganisms (bacteria and fungi) that break down remains and wastes of organisms

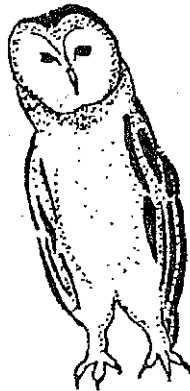
Owl	eats	Field mouse, Vole, Bird, Shrew, Mole, Lizard, Grasshopper, Moth, Beetle
Bird	eats	Seeds, Grasshopper, Moth, Beetle
Fieldmouse	eats	Grass, Seeds, Grasshopper, Moth, Beetle
Vole	eats	Plant roots, Grass, Seeds, Grasshopper, Moth, Beetle
Shrew	eats	Grasshopper, Moth, Beetle
Mole	eats	Grasshopper, Moth, Beetle
Lizard	eats	Seeds, Flowers, Grasshopper, Moth, Beetle
Grasshopper	eats	Plants, Seeds
Beetle	eats	Plants, Flowers, Seeds
Moth	eats	Flowers
Mushroom	eats	Organic Materials; Dead Bodies
Soil Bacteria	eats	Organic Materials; Dead Bodies

NAME \_\_\_\_\_

TEACHER/SECTION \_\_\_\_\_

DATE \_\_\_\_\_

## Food Web



Owl



Field  
Mouse



Bird



Shrew



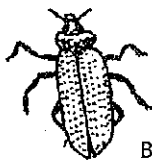
Vole



Mole



Lizard



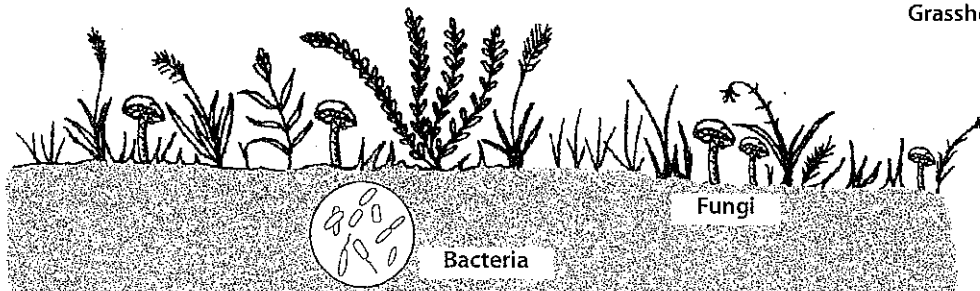
Beetle



Moth



Grasshopper



Bacteria

Fungi

### Investigating Food Webs with Owl Pellets